

# Pallas® Textiles Introduces the Ode to Blossfeldt™ Collection

Inspired by the work of German photographer, plant collector, and educator Karl Blossfeldt, Pallas® has created the Ode to Blossfeldt™ Collection of jacquard upholstery fabrics. Designed by Lori Weitzner, products in the collection offer healthcare facilities luxurious upholstery fabrics with the performance attributes previously attained only through use of vinyl.



## Pallas® Ode to Blossfeldt™

### Effective January 4, 2010

KI and Pallas are registered trademarks of Krueger International, Inc. Crypton is a registered trademark of Hi-Tex, Inc.

© 2010 KI  
All Rights Reserved.  
Litho in USA.  
KI-3222R3/HC/EWB/1209



KI • 1330 Bellevue Street • P.O. Box 8100 • Green Bay, WI 54308-8100 • 1-800-424-2432 • [www.ki.com](http://www.ki.com)



Furnishing Knowledge®

The collection features elegant and sophisticated healthcare textiles that capture the beauty and essence of nature, while utilizing the advanced technology of Crypton®, a patented textile treatment process that seals in the fibers rendering fabric completely repellent to liquid, moisture, and bacteria.



**Flame Resistance**

Passes California Bulletin 117 Section E. Flame resistance refers to a fabric's ability to resist burning.



**Colorfastness to Wet & Dry Crocking**

Passes AATCC 8 Dry Crocking, Class 4 minimum. Wet Crocking, Class 3 minimum. Colorfastness is a fabric's ability to retain color in various conditions. Crocking refers to the rubbing off of color from a fabric when subjected to abrasion.



**Colorfastness to Light**

Passes AATCC 16A or AATCC 16E Class 4 minimum at 40 hours. Colorfastness to light refers to a fabric's ability to resist fading when exposed to light.



**Physical Properties**

Passes Brush Pilling ASTM D3511, 3 minimum. Pilling is the formation of fuzzy balls on the surface of a fabric. Pilling occurs when loose fibers in the fabric are worked to the surface after the fabric is subjected to abrasion. Passes breaking strength ASTM D3597-D1682-64, 50 lbs. minimum in warp and weft. Breaking strength measures a fabric's ability to resist tearing or breaking when subjected to tension. Passes seam slippage ASTM D3597-D434, 25 lbs. minimum in warp and weft. Seam slippage refers to the conditions when fabrics pull apart at a sewn seam.



**Abrasion**

Passes ASTM 3597 modified (10# cotton duck) 30,000 double rubs Wyzenbeek method. Passes ASTM D4966 (21 oz. weight) 40,000 rubs Martindale method. Abrasion resistance is the ability of a fabric to withstand surface wear from rubbing.

■ MEADOWRUE 29.019

**Content:** 51% Polyester, 49% Rayon

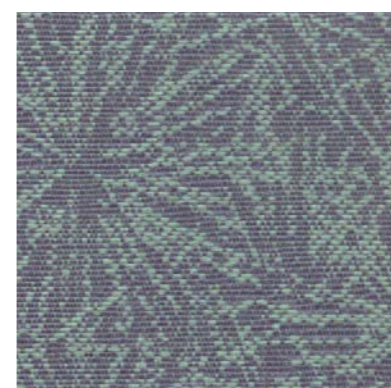
**Width:** 54"

**Abrasion:** 90,000 Double Rubs

**Symbols:**



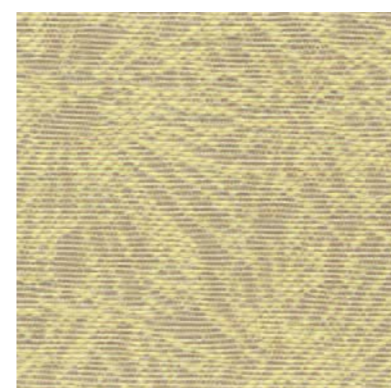
MEADOWRUE/29.019.021 MILKWEED



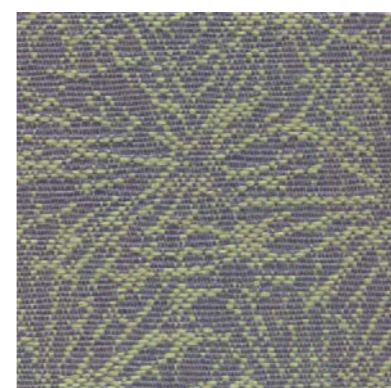
MEADOWRUE/29.019.106 MARITIME



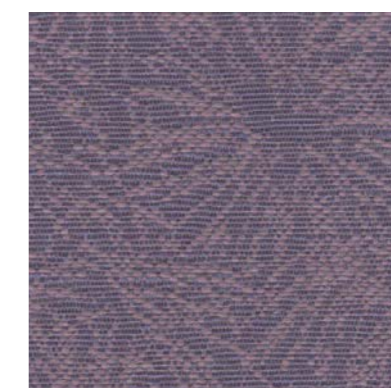
MEADOWRUE/29.019.088 POKEWEED



MEADOWRUE/29.019.041 ROSIN



MEADOWRUE/29.019.126 BLUE SPRUCE



MEADOWRUE/29.019.097 PASSION FLOWER



MEADOWRUE/29.019.031 GREY THISTLE



MEADOWRUE/29.019.078 PLUME POPPY



MEADOWRUE/29.019.059 SUNSPUN