

# Classics

A MorCare™ Collection

**Morbern**



GRADE E  
K1-32461.MORBERN.A08

Aspire • Cumulus • Foliage • New Duration • Ovation • Tradition • Vogue



Foliage  
FG-100 Acorn



Aspire  
AE-119 Tan



Aspire  
AE-115 Almond



Cumulus  
CU-704 Taupe



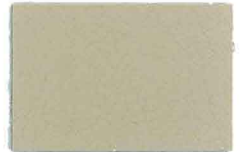
New Duration  
DU-213 Cinnamon



\*Ovation  
OV-2+7 Light Camel



New Duration  
DU-150 Taupe



New Duration  
DU-148 Bone



Foliage  
FG-107 Cherry Blossom



New Duration  
DU-202 Autumn



Aspire  
AE-114 Rawhide



New Duration  
DU-210 Tumbleweed



Foliage  
FG-106 Country Club



Aspire  
AE-113 Cinnamon



Aspire  
AE-118 Flint



New Duration  
DU-134 Mauve



Aspire  
AE-100 Ruby



Aspire  
AE-111 Cherrystone



New Duration  
DU-162 Ash



New Duration  
DU-160 Cloud Grey



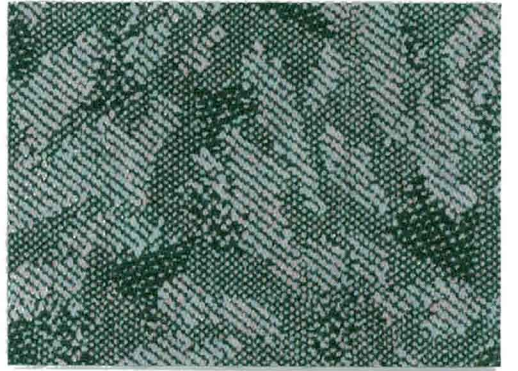
New Duration  
DU-144 Desert Rose



Vogue  
VO-91 Claret



New Duration  
DU-220 Stormy



Vogue  
VO-69 Slate



Aspire  
AE-109 Burgundy



New Duration  
DU-143 Cranberry



Foliage  
FG-103 Pewter



New Duration  
DU-158 Greystone



Aspire  
AE-117 Black Shadows



New Duration  
DU-100 Black

\* Pattern Ovation is shown railroaded.



Tradition  
TR-313 Sand



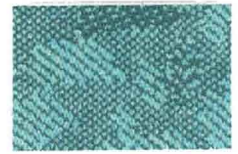
Aspire  
AE-104 Silver Moss



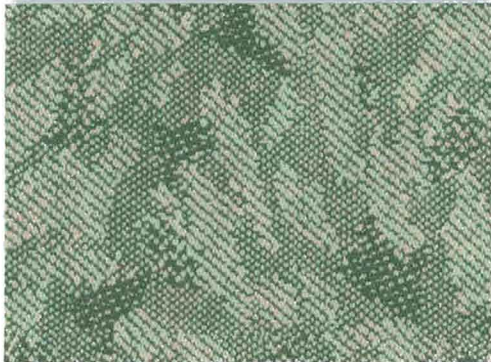
New Duration  
DU-126 Dusty Jade



Foliage  
FG-101 Wilderness



Vogue  
VO-68 Mist



Vogue  
VO-81 Fern



New Duration  
DU-110 Grey Teal



Vogue  
VO-80 Smoke



Foliage  
FG-102 Grotto



Cumulus  
CU-718 Evergreen



Aspire  
AE-102 Juniper



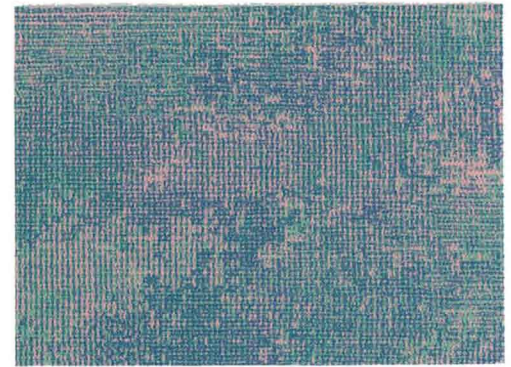
\*Ovation  
OV-207 Ocean Sand



Tradition  
TR-319 Wedgewood



Vogue  
VO-67 Azure



Cumulus  
CU-710 Dusk



Foliage  
FG-105 Bluebell



New Duration  
DU-201 Atlantis



Aspire  
AE-112 Grape



Aspire  
AE-108 Bluebell



New Duration  
DU-108 Wedgewood



\*Ovation  
OV-211 Wedgewood



New Duration  
DU-146 Purple Grey



Aspire  
AE-105 Navy



New Duration  
DU-118 Adriatic



Tradition  
TR-322 Baltic



New Duration  
DU-116 Cobalt



Aspire  
AE-106 Delft

\* Pattern Ovation is shown railroaded.

# Classics

## A MorCare™ Collection

Aspire • Cumulus • Foliage • New Duration • Ovation • Tradition • Vogue

### Specifications

- Finished Width: 54 inches
- Standard Weight: 32.25 ± 1.5 ounces per linear yard
- Nominal Total Thickness: .040 ± .004 inches (40 ± 4.0 mils)
- Abrasion Resistance: No significant wear after 500,000 double rubs with #8 cotton duck using the Wyzenbeek test method
- Roll Length: 30 linear yards
- Cold Crack: -25° F
- Mildew & Bacteria (Staph) Resistant
- Anti-static Slip Finish
- Urine Stain Resistant
- Sulfide Stain Resistant
- Oil Resistant
- Enhanced Bleach Resistance

### Flame Resistance

Manufactured to meet the following flammability\* requirements:

- UFAC Class 1
- BIFMA Class A
- California 117, Section E
- FMVSS 302
- Federal Specification CCC-A-700J
- Port Authorities of New York and New Jersey
- CID-A-A-2950A (Formerly CCC-A-680a)
- Federal Standard 191A Test Method 5903.1
- FAA:FAR 25.853 (a) and Appendix F, Part I (a)(1)(ii)

\* This term and all corresponding data refer to typical performance in the specific test indicated and should not be construed to imply the behavior of this or any other material under actual fire conditions.

### MorCare Classics Care and Cleaning Instructions

In general, most common stains can be cleaned using warm, soapy water and clear water rinses. Moderate scrubbing with a medium bristle brush will help loosen soiling materials from the depressions of embossed surfaces. For more stubborn stains, use Formula 409® commercially available mild detergent† in accordance with the manufacturer's instructions.

Full strength rubbing alcohol or mineral spirits‡ may be tried cautiously as a last resort on very stubborn stains, if the above suggestions do not work. Indiscriminate use of any solvent, or solvent containing cleaner, can severely damage or discolor vinyl.

**Note:** Detergents should never be used on a regular or repeated basis for normal cleaning. Morbern recommends repeated rinsing with clear water after any cleaning procedure.

When disinfecting with bleach, dilute with water up to a 9:1 ratio (10%).

Liberal apply diluted disinfectant using a sponge. Rinse with cold water several times. Wipe dry and repeat if necessary. Federal regulations require that guidelines on the bleach label need to be followed for antiseptic or antimicrobial purposes.

† When opening a new container, please test the cleaner in an inconspicuous area as cleaner manufacturers may change formula without notice.

Morbern cannot be responsible when unknown changes are made by the manufacturer of the cleaner to their formulations between our 6-month verification intervals.

‡ Caution: Exercise care as these solvents are flammable. Use only small quantities of solvents and keep clear of any sources of ignition. Wear protective gloves and ensure cleaning takes place in a well ventilated area.

Morbern is an ISO 9001:2000 Certified Producer  
[www.morbern.com](http://www.morbern.com)

©2008 Morbern, Inc.

MELLOHIDE™  
Brand Fabric

Morbern