

Focus Mesh



Pattern: Focus Mesh

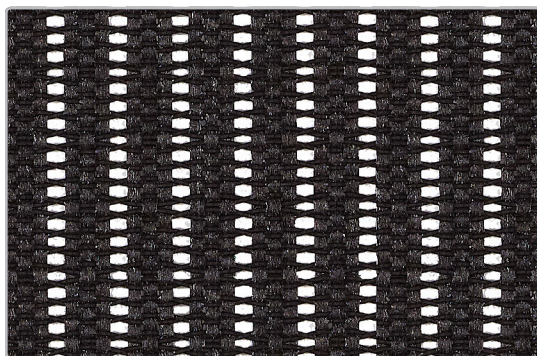
70% Elastomeric,
30% Polyester

Abrasion:
100,000+ double rubs

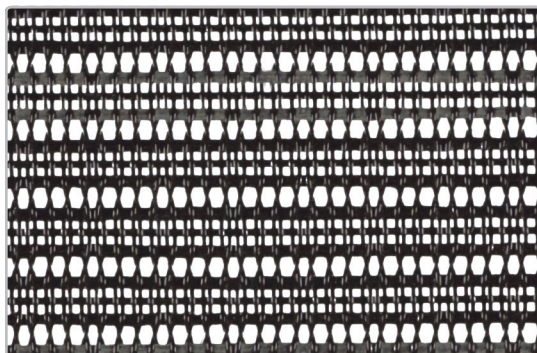
CAL 133 approved (133)

Bleach cleanable **BLEACH**
Cleanable

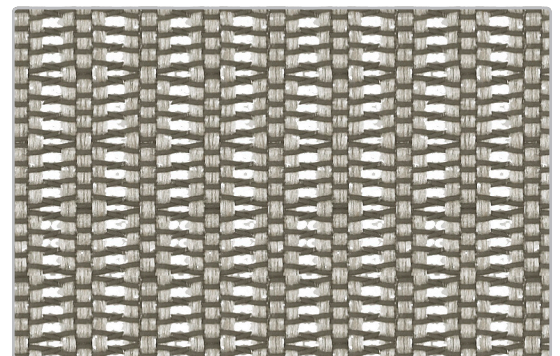
Slate



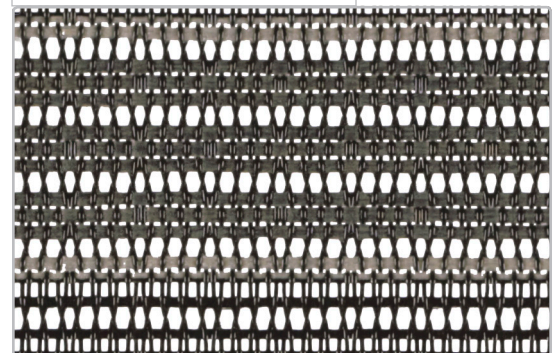
Black



Freeway



Sand



Impress

Pattern	Focus Mesh
Content	70% Elastomeric, 30% Polyester
Abrasion	100,000+ Double Rubs
Applicable ACT®	☼ ▲ ☼ ☼ ★
Cleaning Code	WS/BC: Water based cleaning agents and foam may be used, vacuuming or light brushing is recommended to prevent dust and soil buildup. Bleach cleanable BLEACH Cleanable
Samples	To order samples, call (888) 274-8664 or visit sitonit.net or ideondesign.com

icon upholstery definitions



Fire Retardancy

Flammability testing determines a fabric's resistance to burning. Passes Cal 117.



Colorfastness to Wet and Dry Crocking

The rubbing off of color from fabric onto clothing, hands or other materials and can occur under wet or dry conditions. Passes AATCC 8-1974 Dry Crocking. Class 4 minimum, Wet Crocking. Class 3 minimum.



Colorfastness to Light

The degree to which fabric will retain its color when exposed to light. Passes AATCC 16A-1974 or AATCC 16E-1976. Class 4 minimum at 40 hours
Note: Class 4 minimum at 60 hours is recommended for direct sunlight exposure.



Physical Properties

Brush Pili Test to determine a fabric's pilling, Breaking/Tensile Strength Test determines the ability of a fabric to withstand tension without breaking or tearing. Seam Slippage Test determines the pulling apart of fabrics at the seams. Passes Brush Pili ASTM D3511, 3-4 minimum, Breaking Strength ASTM D3597-D1682-64 (1975) 50 lbs. minimum in warp & weft, Seam Slippage ASTM D3597-D434-75 25 lbs. minimum in warp & weft.



Abrasion

The ability of a fabric to withstand damage from wear and rubbing. Passes Heavy Duty Contract ASTM 3597 modified (No.10 cotton duck); 30,000 double rubs Wyzenbeek Method or ASTM 4966 modified (with 21 oz. wt.); 40,000 rubs Martindale Method.



Cal 133

The mesh can be used in combination with other designated SitOnIt components to meet the California Technical Bulletin 133 standard for furniture flammability.

SitOnIt • Seating®



(888) 274-8664

(714) 995-4855 Fax

sitonit.net

sales@sitonit.net

IDEONDesign.com

sales@ideondesign.com

Showroom Locations

Los Angeles

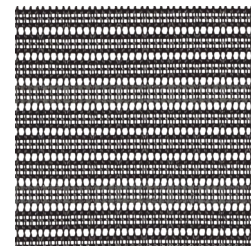
6415 Katella Avenue
Cypress, CA 90630

Chicago

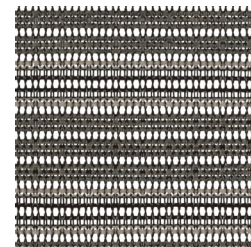
222 Merchandise Mart Plaza
Suite 1150
Chicago, IL 60654

New York City

11 East 26th
New York, NY 10010



Freeway



Impress