



Examination Light

Super Bright Spot[®] LED

This dimmable, uniform LED spot on a drift-free flex-arm is ideal for a wide variety of healthcare applications.



burton[®]

Examination Light

Super Bright Spot[®] LED

Superior to halogen units in light quality, heat output, energy usage and upkeep. Super Bright Spot[®] LED is ideal for General Practice, Obstetrics/Gynecology, ENT, Ophthalmology, Dermatology/Plastic Surgery, Labor & Delivery, Outpatient Surgery, Emergency Room and Veterinary applications. Mounted on a drift-free flex-arm, Super Bright Spot[®] LED has a dimmable 1-4" spot diameter (at 16") and is available on Mobile Floor Stand, Wall or Pole Mount. The floor stand's compact 18" lockable caster base provides exceptional utility and reliability.

Light Quality

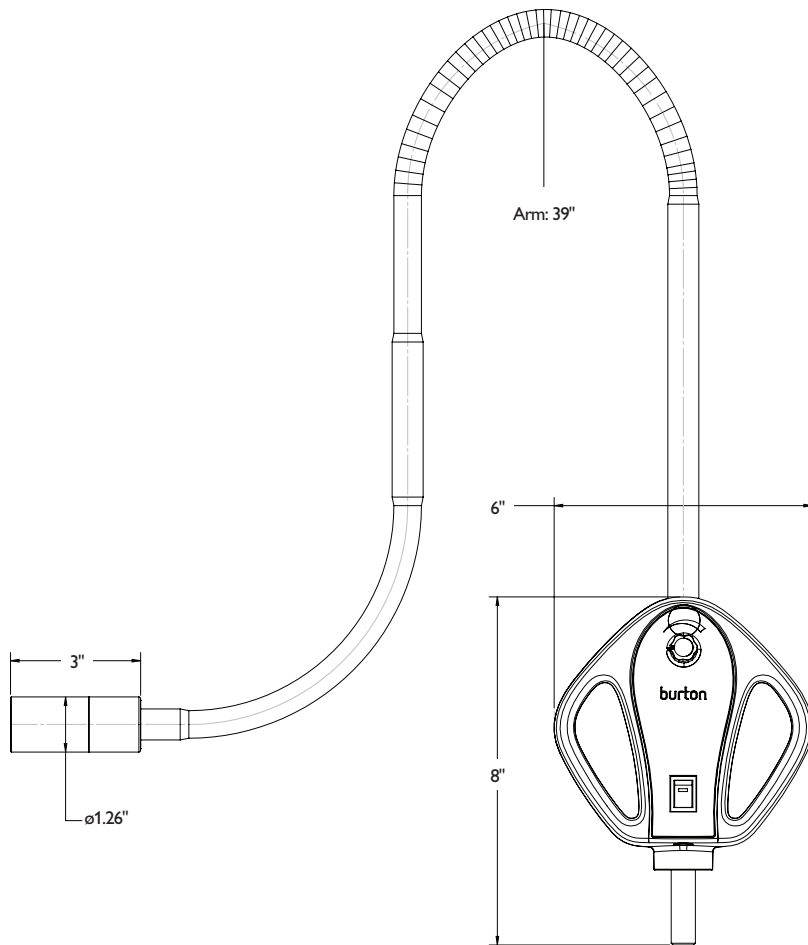
- High CRI (>90) to accurately render skin and tissue tones
- Well-defined, consistent light doesn't cause "hot spots"
- Dimming control from 100% to 5% provides exactly the desired amount of light

Additional Product Benefits

- LED light source consumes less energy, provides long-lasting high-quality illumination that requires less maintenance and produces less heat
- Flex arm provides easy positioning without drifting
- User-friendly spot diameter control at light head
- Ergonomically-designed handles ease placement of light
- Five, low friction, lockable casters on Floor Stand model ease positioning and securing placement
- Low-voltage power sources eliminate cumbersome power cord
- Easy-to-clean smooth housing design aids infection prevention measures
- 5-year limited warranty

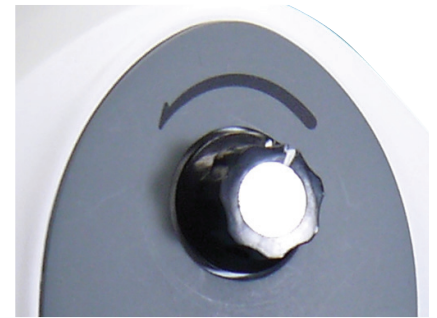


Super Bright Spot LED product dimensions



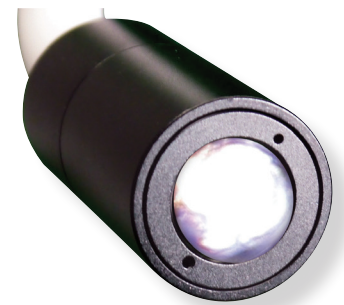
Intuitive and ergonomic

Ergonomically-designed handles ease light placement and focus



Dimming feature

Light Dimming control from 100% to 5% level provides exactly the right amount of light needed for the exam



Spot diameter control

User-friendly control at light head adjusts light diameter without causing hot spots

Summary of technical data

SUPER BRIGHT SPOT® LED

Illuminance:	20,000 Lux at 40.64 cm (16")
Color Temperature:	5200 Kelvin
CRI (Color Rendering Index):	>90
Light Source:	Light Emitting Diode (LED)
Rated Life:	50,000-hour average LED life
Power:	6 Watts
Mounting Options:	Mobile Floor Stand, Wall Mount, Table Mount, Pole Mount
Applications:	ENT, Gynecology, Ophthalmology, Plastic Surgery, Outpatient Surgery, Emergency Room, Labor and Delivery, Family Practice, Veterinary
Certifications/Approvals:	SGS / IEC 60601-1 / IEC 606-1-2 / IEC 60601-2-41 / CAN/CSA C22.2 601.1M90
Product Warranty:	5-year limited warranty



Extremely energy efficient

Super Bright Spot® LED features a long lasting, energy-efficient LED light source with an incredible lifespan of 50,000 hours or more

Ordering Information



Floor Stand



Table Mount



Wall Mount



Pole Mount

All models are sold complete with light and flex-arm system. (Product images not to scale.)

SUPER BRIGHT SPOT® LED

Universal Input 100-240v 50-60Hz Model	Description
SBL-FL	Super Bright Spot® LED w/ Floor Stand (120V Wall Plug)
SBL-T	Super Bright Spot® LED w/ Table Mount (120V Wall Plug)
SBL-W	Super Bright Spot® LED w/ Wall Mount (120V Wall Plug)
SBL-P	Super Bright Spot® LED w/ Pole Mount (120V Wall Plug)
SBL-FL-INT	Super Bright Spot® LED w/ Floor Stand with International Wall Plug Kit
SBL-T-INT	Super Bright Spot® LED w/ Table Mount with International Wall Plug Kit
SBL-W-INT	Super Bright Spot® LED w/ Wall Mount with International Wall Plug Kit
SBL-P-INT	Super Bright Spot® LED w/ Pole Mount with International Wall Plug Kit

Accessories	
4000376	Arm Sheaths – 1 carton with 5 dispensers of 25 sheaths
4000368	AC Adapter with PSE Approval US STANDARD 120V
4000378	International Wall Plug Kit



© 2018 Burton Medical. All rights reserved.
Burton Medical reserves the right to make changes in specifications and/or to discontinue any product at any time without notice or obligation and will not be liable for any consequences resulting from the use of this publication.

burton®

Burton Medical, LLC
2300 W Windsor Ct., Suite C
Addison, IL 60101 USA
Phone (800) 444-9909, Fax (800) 765-1770
Burtonmedical.com