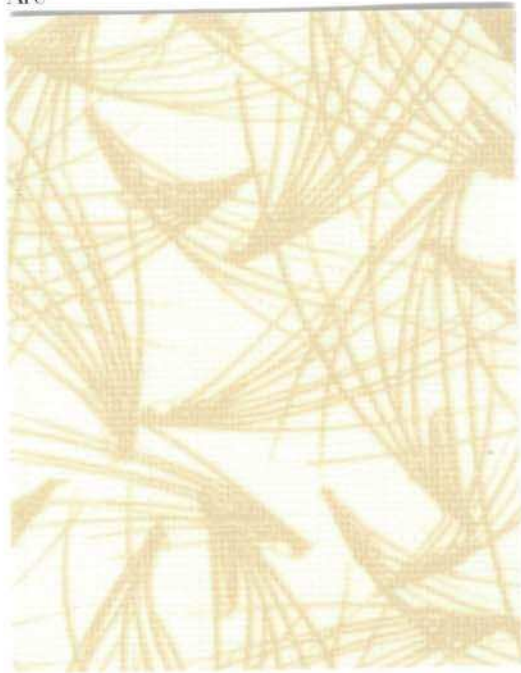


Arc



AC-509 White Pine



AC-507 Silver Screen



AC-508 Sunglow



AC-504 Lakeside



AC-502 Flora



AC-500 Autumn



AC-503 Lagoon



AC-505 Nightingale



AC-506 Phoenix



AC-501 Dragonfly

Surge*



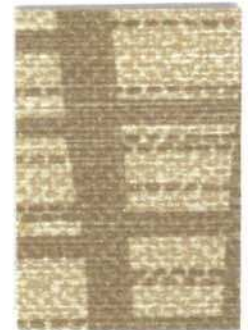
SG-702 Caramel



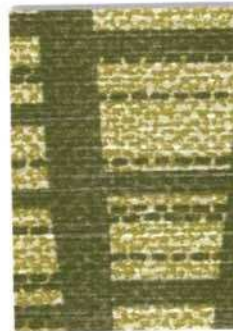
SG-707 Resort



SG-701 Bombay



SG-702 Caramel



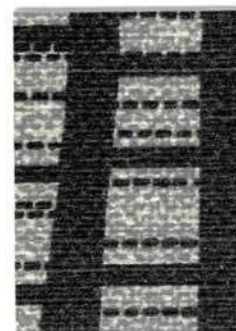
SG-705 Nile



SG-700 Avenue



SG-708 Waterfall



SG-704 Film Strip



SG-703 Casino



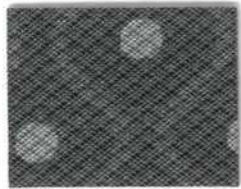
SG-706 Reservoir

*Pattern Surge is shown railroaded.

Aristo*



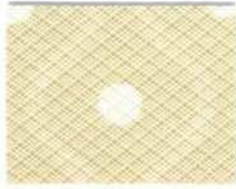
AO-800 Baked Pottery



AO-810 Vapor



AO-807 Silhouette



AO-811 White Water



AO-808 Sisal



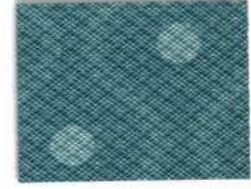
AO-801 Gold Mine



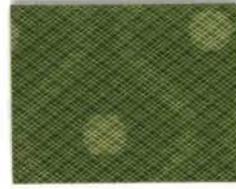
AO-802 Heat Wave



AO-803 High Seas



AO-805 Nirvana



AO-804 Laurel



AO-806 Sangria



AO-809 Tiger Eye

Vitality



VT-208 Iced Coffee



VT-209 Mohair



VT-222 Vanilla



VT-218 Sterling



VT-203 Blond



VT-208 Iced Coffee



VT-207 Hot Spring



VT-219 Straw



VT-205 Daybreak



VT-215 Robyn Egg



VT-223 Willow



VT-220 Suburb



VT-200 Apricot



VT-213 Red Carpet



VT-210 Old Glory



VT-212 Parrot



VT-216 Sienna



VT-217 Slate



VT-214 Red Velvet



VT-201 Armada



VT-211 Park



VT-206 Henna



VT-221 Tungsten



VT-204 Crushed Plum



VT-202 Black Velvet

Verve



VE-400



VE-401

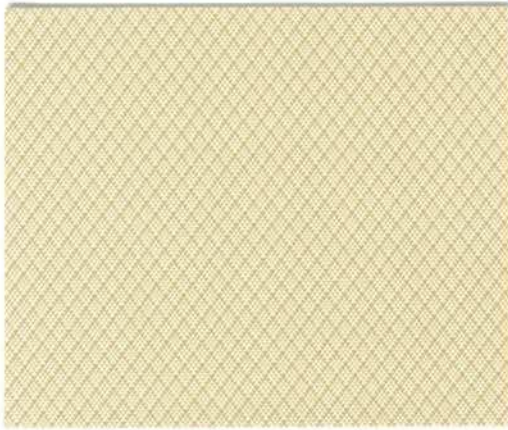
Flair



FA-307

*Pattern Aristo is shown railroaded.

Verve



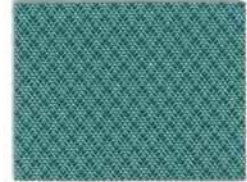
VE-400 Café



VE-406 Mist



VE-400 Café



VE-402 Glacier



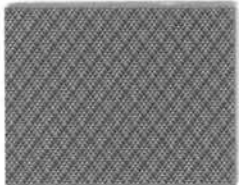
VE-403 Honey



VE-407 Nectarine



VE-409 Reflection



VE-401 Chrome



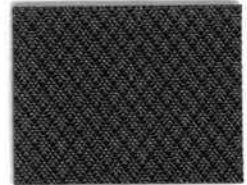
VE-404 Jet Set



VE-405 Keylime



VE-410 Ruby Slippers



VE-408 Polished Metal

Flair



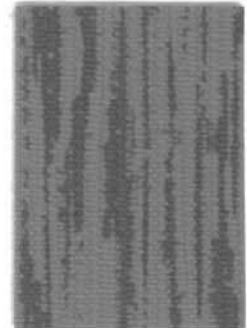
FA-307 Mineral



FA-302 Cashmere



FA-307 Mineral



FA-306 Melody



FA-304 Golden Poppy



FA-300 Adobe



FA-303 Dusk



FA-305 Malachite



FA-308 Red Dawn



FA-301 Blue Ribbon

—
C
M
A
Spe
• F
• S
p
• N
i
• A
al
d
Fla
Mar
• U
• B
• C
• F
* T
in
u
Car
In g
rins
depr
avai
Full
stub
or s
Disi
If re
disin
not i
prod
clear
Note
Spec
Whe
Libe
and
follo
† W
m
†† C
an
pl
S
SPI
T4I
WW